

# PART#: 10-1015



PRINT

## Vehicle Application

- YEAR: 2011-2019
- MAKE: CHEVY SILVERADO/GMC SIERRA
- MODEL: 2500 3500, 4x4,
- ENGINE: 8 Cylinder Diesel

## Required Tools

- Flathead Screwdriver, 5/16" Nut Driver or 5/16" socket
- Mallet/Hammer
- 15mm Socket
- 19mm Socket
- 17mm Socket
- Ratchet
- 12" Driver Extension

## Optional Tools

- Vehicle Lift
- Transmission Jack

## Before You Start

- Please read the entire product guide before proceeding
- Ensure all parts are present.
- If you are missing any parts, please call or text us at (909)-675-1313
- Do not work on your vehicle while the underbody components are hot.



Hi. Need any help?



- Make sure the vehicle is in park or the parking brake is set if you plan on working on the ground. If working on a lift, make sure the vehicle is lifted safely and securely.

## Important Notes

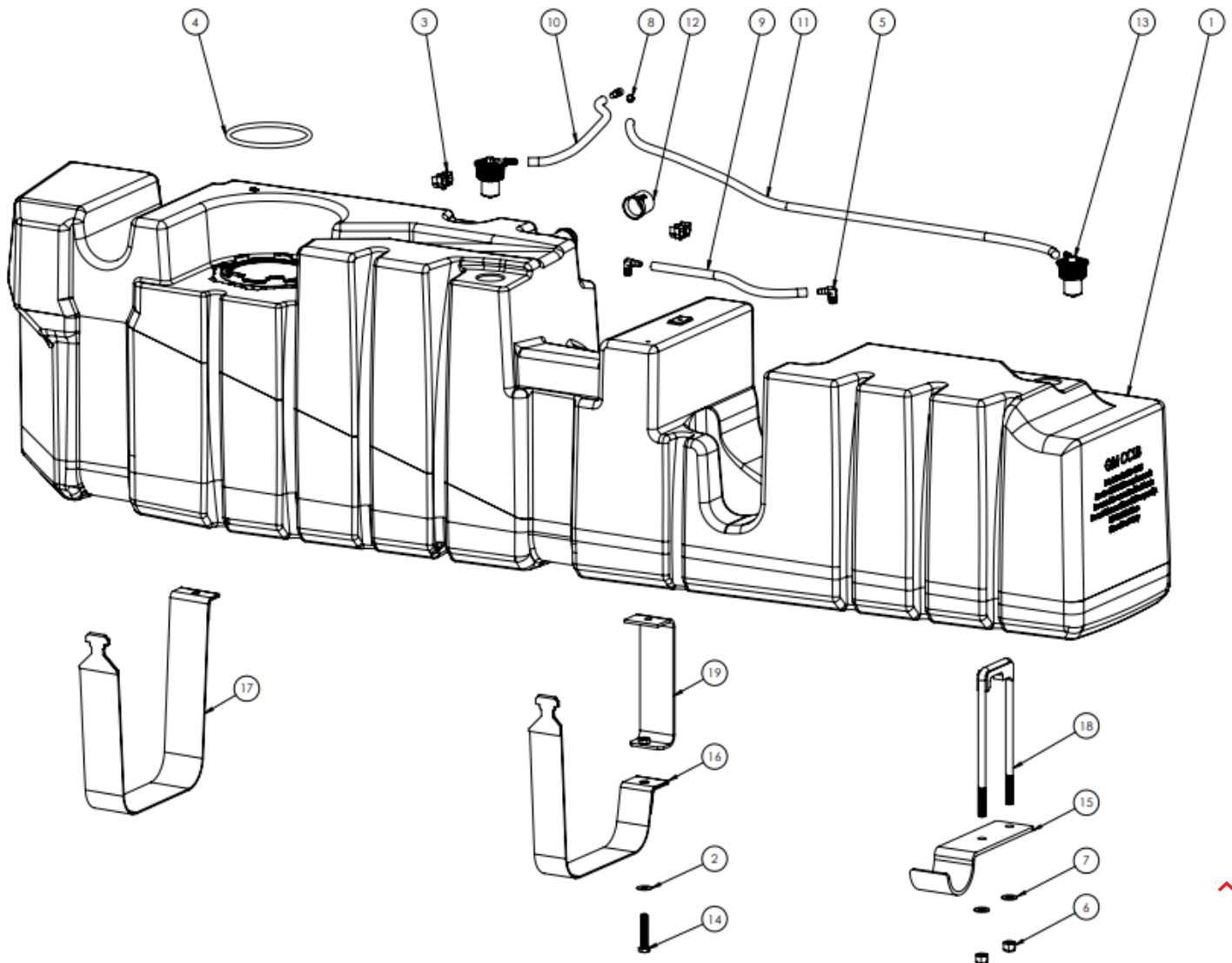
Disconnect and isolate both of the negative battery cables.

Before installing S&B Tank, conduct pressure test to ensure o'ring is properly seated.

Auxiliary Fuel Tanks will void the Lifetime Warranty.

DIESEL FUEL ONLY.

**Important Note:** This tank does not currently fit vehicles with a 2 piece driveline. A revised tank is being developed that will fit both 1 and 2 piece drivelines and will be available by the end of April.



ITEM NO.	PART NUMBER	DESCRIPTION	QTY.
1	10-1015	HIGH CAPACITY REPLACEMENT TANK	1
2	AI1341-00	Washer, Flat, 3/8, 1.00 OD, SS	1
3	TI1017-00	FUEL LINE HOLDER (2 LINES)	2
4	TI1094-00	BUNA-N 50 DURO 8MM CS x 17.32" CUT LENGTH	1
5	TI1113-00	1/4 MALE NPT X 5/16 IN HOLSE BRASS ADAPTOR	2
6	TI1123-00	NYLON-INSERT LOCK NUT	2
7	TI1124-00	WASHER	2
8	TI1141-00	ROLLOVER VENT CAP	2
9	TI1149-12	12" OF 5/16" FUEL HOSE	1
10	TI1149-16	16" OF 5/16" FUEL HOSE	1
11	TI1149-54	54" OF 5/16" FUEL HOSE	1
12	TI1175-00	ICV, IN FILL PIPE	1
13	TI1226-00	ROLLOVER VENT	2
14	TI1247-00	M10 X 1.50MM THREAD,60MM LONG	1
15	TI1284-00	FRONT HOOK	1
16	TI1285-00	MIDDLE STRAP	1
17	TI1286-00	REAR STRAP	1
18	TI1287-00	FRONT U-BOLT	1
19	TI1336-00	EXTENSION FOR MIDDLE STRAP	1

## INSTALL INSTRUCTIONS



## **STEP 1**

Loosen the hose clamp and remove the filler hose.



## **STEP 2**

Remove the hose clamp and hose from the main vent line attached to the fuel sending unit. You can reach over the driveline to access this.



### **STEP 3**

Support the bottom of the tank with a floor jack or transmission jack.



## STEP 4

Disconnect the blue and white fuel connectors. Please see our install video if you need help with removing these.

<https://www.youtube.com/watch?v=vdO4PNBpR0k&t=569s> (<https://www.youtube.com/watch?v=vdO4PNBpR0k&t=569s>)

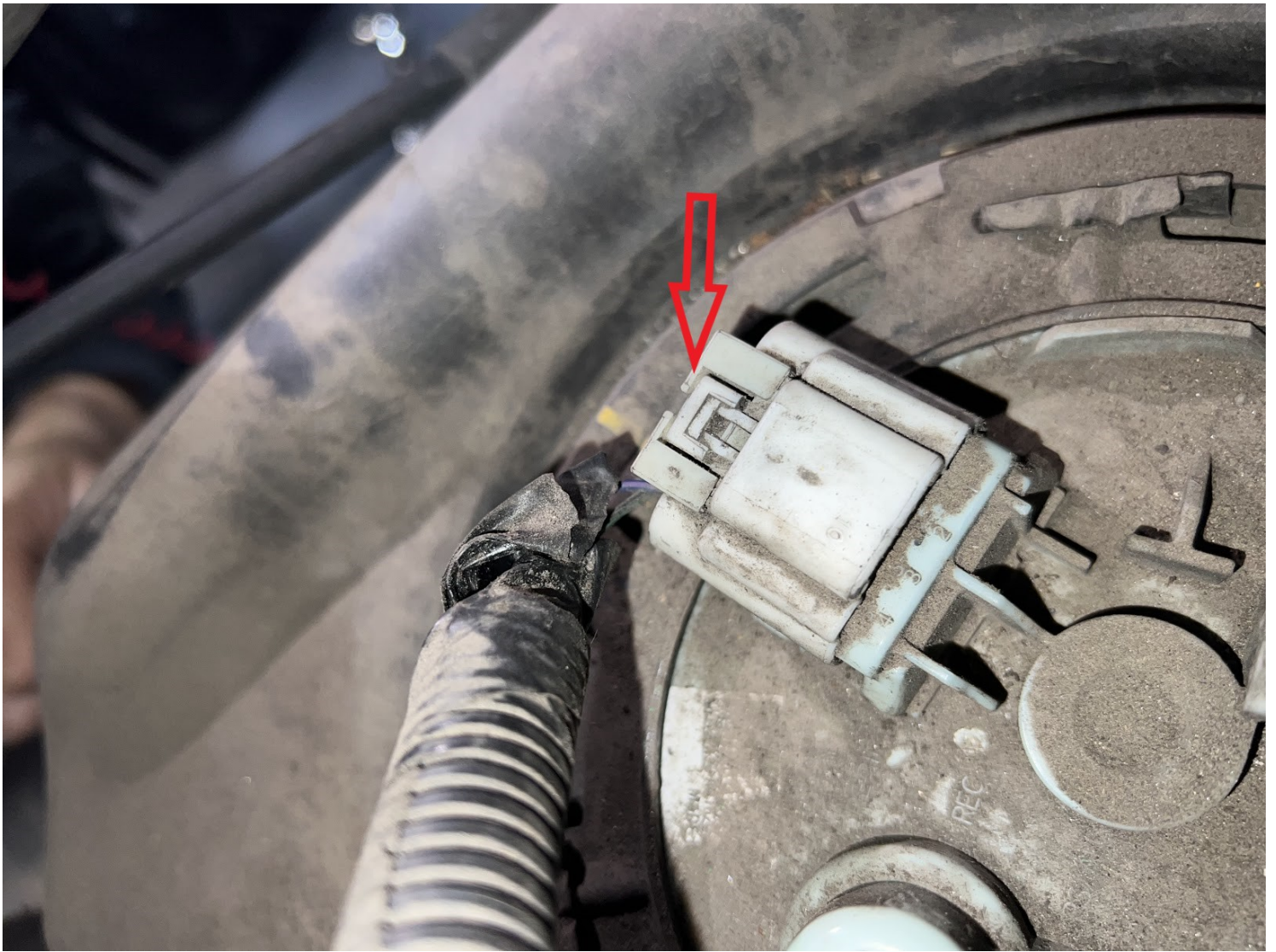




# STEP 5

Remove both fuel tank straps with a 15mm socket.





## STEP 6

If you can reach the fuel sending unit electrical connector, you can disconnect it before dropping the tank. If you need more room to disconnect the connector, lower the tank 6" and disconnect. Slide the red lock out and depress the tab in the middle then slide the connector off.



## **STEP 7**

Hit the locking ring counter clockwise to release the OEM sending unit.



## **STEP 8**

Place the included S&B oring in the oring groove on the S&B Tank. Install the sending unit and make sure to not damage the fuel float.



## **STEP 8A**

The tab on the sending unit should face the skinny arrow on 2017-19 trucks and the block arrow on 2011-16 trucks



## STEP 9

Press down of the locking ring to get the ring started and then hit the ring close wise until the locking ring goes under the indentation in the ring and is locked into place.



## STEP 10

Place the included check valve into the filler hose. The arrow on the valve should be facing into the tank.



## STEP 11

Take the half strap and attach it to the frame using the oem bolt. The longer and more squared off side will be the side that attaches to the frame. This strap was updated to have a welded on nut instead of the slip nut



## STEP 12

Install the included U-Bolt over the frame. Once installed, make sure there is space between the brake lines and U-Bolt. If the brake lines are touching the U-Bolt, call us and don't install the tank.



## STEP 13

Center the hydraulic jack underneath the fuel tank and raise it into position. Lift Install: Hydraulic Jack Floor Install: Floor jack with added support to properly hold tank



## STEP 14

Attach the front support strap to the U-Bolt. Then tighten the washers and lock nuts onto the u-bolt.



## STEP 15

Install the middle and rear S&B fuel tank straps. Make sure you take the supplied S&B bolt and apply blue lock-tight to the body of the bolt. - 15mm socket and extension





## **STEP 16**

Reinstall fuel filler hose to filler on vehicle side and tighten clamp



## **STEP 18**

Route the 2 5/16" rollover valve hoses and zip tie them up to the filler.



## **CHECKLIST**

This final checklist is very important. #1 Make sure all nuts are safely fastened and torqued. #2 Ensure there is proper driveshaft clearance and the straps are tight #3 Double check fuel line connections, the electrical connection as well as the vent and fill lines. #4 Lastly, fill the tank full and check for any leaks. If you have any questions, call or text us at 909.675.1313