



SHOP BY VEHICLE



0

# INSTALL INSTRUCTIONS FOR 75-5091



PRINT

## BEFORE YOU START

- Please read the entire product guide before proceeding.
- Ensure all parts are present.
- If you are missing any of the components, call our customer support at (909) 947-0015.
- Do not work on your vehicle while the engine is hot.
- Make sure the engine is turned off and the vehicle is in Park or the Parking Brake is set.
- Note: This intake kit may not fit with the following Aftermarket Parts installed: Body Lift or Lowering Kit Custom Hood, Throttle Body Spacer / Upgrade

## REQUIRED TOOLS

- 10mm Wrench & Socket
- T-20 Security Torx Wrench (Supplied w/ Kit)
- 5/16" Nut Driver or Flat Blade Screwdriver
- Phillips Screwdriver

ENTER TO WIN





ITEM	QTY.	DESCRIPTION	P/N	ITEM	QTY.	DESCRIPTION	P/N
A	1	INTAKE TUBE	AL1265-00	O	3	WASHER, FLAT, M6	AI1535-00
B	1	INTAKE BOX	AL1241B-00	P	4	SCREW, TRUSS, 1/4-20	AI1684-00
C	1	CLEAR LID	AI1716-00	Q	1	FILTER MINDER GROMMET	AI1563-00
D	1	LID SEAL	AI1766-04	R	1	MAF PLATE	AI1822-00
E	1	COUPLER	AI1354C-00	S	1	MAF GASKET	AI1823-00
F	1	AIR FILTER	KF-1035	T	1	GROMMET PLUG	AI1705-00
G	1	BOX SEAL	AI1717C-00	U	2	HOSE CLAMP, #72	AG1009-00
H	1	FENDER SEAL	AI1829C-00	V	1	BOLT, HEX, M6 X 30mm	AI1414-00
I	1	BOX PLUG	AI1718C-00	W	3	SPACER GROMMET	AI2051-00
J	—	FILTER MINDER (NOT INCLUDED WITH THE KIT)					
K	1	HOSECLAMP, #80	AG-1010-00				
L	2	SCREW, PAN HEAD, 8-32	AI1837-00				
M	4	RUBBER WASHER	AI1571-00				
N	2	BOLT, HEX, M6 X 25mm	AI1415-00				

## STEP 1

With the ignition switched off and the parking brake set, disconnect the negative battery cables on both batteries.

**IMPORTANT:** Failure to disconnect the battery for a minimum of 2 hours may cause the Check Engine Light to illuminate upon completion of the installation or subsequent operation. **DO NOT SKIP THIS STEP!**



## STEP 2

Disconnect the MAF sensor harness.



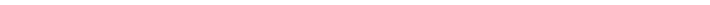
## STEP 3

Loosen both hose clamps and remove the stock intake tube from the vehicle.



## STEP 4

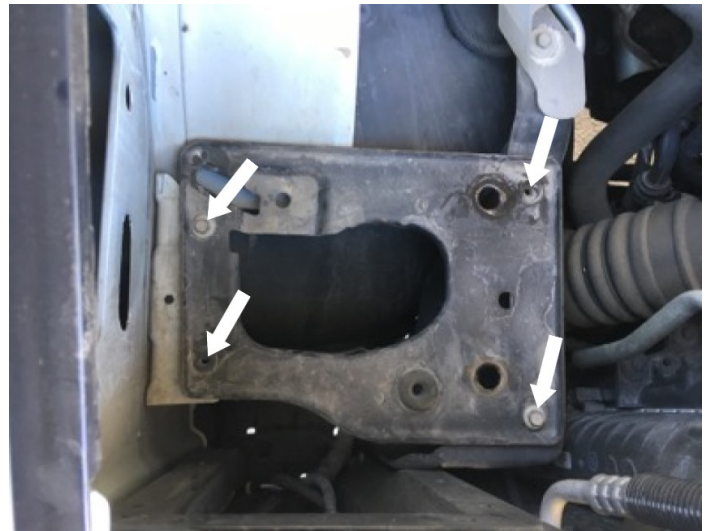
Pull up on the stock airbox to release the prongs from the two rubber grommets on stock airbox tray.





## STEP 5

Remove the four bolts on the stock airbox tray and remove the tray from the vehicle. Be sure to save the speed clips underneath. They will be reused to install the Intake Box (B) in Step 9.



## STEP 6

Insert the Fender Seal (H) onto the Intake Box (B).



## STEP 7

Insert the Tube Seal (**G**) onto the Intake Box (**B**).

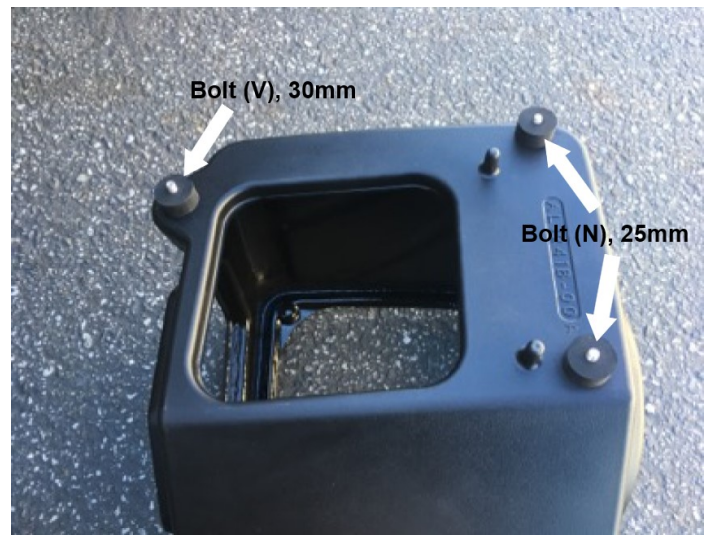


## STEP 8

Place the M6 Bolts (**N** & **V**) and Washers (**O**) through the mounting holes on the Intake Box (**B**) then press the Spacer Grommet (**W**) onto the bolts. Note which M6 bolts goes where. The two mounting holes closest to the engine uses the 25mm and the

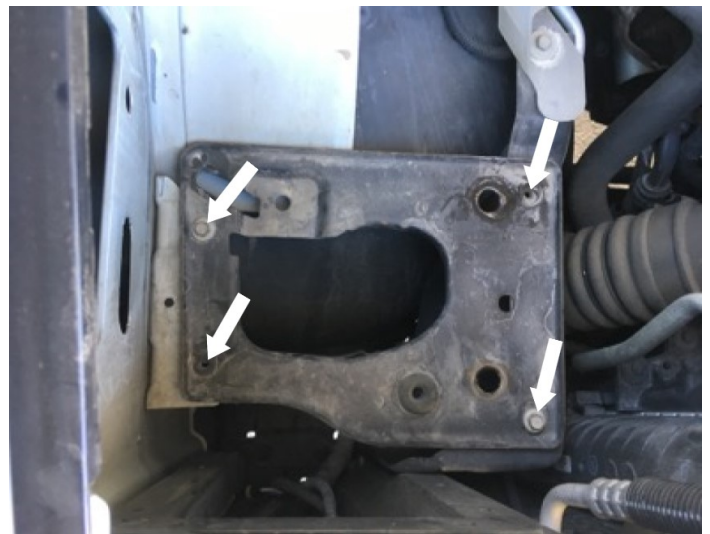


closest to the fender uses the 30mm.



## STEP 9

Install the Intake Box (B) into the truck. Align the bolts with the mounting points and tighten.



## STEP 10

Determine whether or not you want to install the Box Plug (I).



## STEP 11

Remove the sensor from the stock intake tube. Use the provided MAF Gasket (S), MAF Mount (R), and Screws (L) to install the MAF sensor into the Intake Tube (A).



## STEP 12

If you want to reuse the stock filter minder, insert the provided Filter Minder Grommet (Q) into the Intake



Tube (A). If not, skip to Step 13.



## STEP 13

Insert the filter minder into the grommet.



## STEP 14

Install the Grommet Plug (T) into the Intake Tube (A).



## STEP 15

Insert the Air Filter (F) into the Intake Box (B).



## STEP 16

Slide the Coupler (E) and two #72 Hose Clamp (U) onto the Intake Tube (A). Tighten the hose clamp closest to the tube. Leave the other end loose.



## STEP 17

Insert the Intake Tube (A) first into the Intake Box (B) and then slide the other end of the Coupler (E) onto the turbo mouthpiece. Tighten the #72 Hose Clamp (U) on the turbo mouthpiece.

## STEP 17 (IMAGE 2)



## STEP 18

Slide the Air Filter (**F**) onto the Intake Tube (**A**) and tighten the #80 Hose Clamp (**K**).

## STOP! READ THIS BEFORE CONTINUING THE INSTALL

If your kit came with our new snap-in lid design, please proceed to **STEP 22** to install your snap-in lid. If your lid is the traditional screw in lid,

please proceed to the next  
step.

## **STEP 19**

Press the Lid Seal (D) into the  
grooves on the Intake Box  
(B).

## **STEP 20**

Remove the protective  
covering from the Clear Lid  
(C).



## STEP 21

Place the Clear Lid (C) on top of the Intake Box (B) and secure the lid using the four provided Lid Screw (P) and Rubber Washer (M).

Go To Step 25

## STEP 22

For Snap-In Lids Only

Remove the protective covering from the Clear Lid.

## STEP 23

For Snap-In Lids Only

Stretch silicone lid seal around the perimeter of the clear lid. It should be a snug fit.

## **STEP 24**

For Snap-In Lids Only

The notch on the lid and the tab of the lid seal should mate in the same corner.

## **STEP 25**

Reconnect the MAF sensor harness.

## **STEP 26**

Reconnect the negative terminal on both batteries. Inspect your installation, make sure the kit is properly positioned and all fasteners are secure. Affix the ID label near the intake kit. The installation is now complete.



## WIN A FREE TOOL TRAY

---

Sign-up below to receive the latest on product launches, insider tips and more. You'll also be entered into a tool tray giveaway where we choose a new winner every week.

Email Address

Sign Up

